

# SERVICE INFORMATION



<b>SI number:</b>	01/063/2021	<b>Date:</b>	01.02.2021
<b>Replaces:</b>	01/050/2015	<b>No. of pages:</b>	2

<b>Title:</b>	New correction signal frequency (2021) for the BCM 05 GPS receiver		
<b>Product:</b>	BCM 05		
<b>Priority:</b>	<input type="checkbox"/> Immediately	<input checked="" type="checkbox"/> Next service	<input checked="" type="checkbox"/> Fix-as-fail
			<input checked="" type="checkbox"/> Information
<b>Serial number range:</b>	-		
	-		
	-		
	-		
	-		

As part of the continuous product improvement, the correction signals of the BCM GPS receiver will be changed.

Starting from 01.02.2021, StarFire correction signal might only be available to a limited degree due to a frequency change. The usual accuracy of the GPS receiver will thus be reduced.

An update of the GPS firmware is required to receive coordinates with the usual accuracy (SF1/SF2).

### Please inform the affected customers in your area!

The change of the firmware is to be carried out according to the enclosed description.

The required firmware is available for download under the following link:

<https://www.bomag.com/ww-en/serviceinfostarfire2021/>

### Requirements for the new configuration:

Pos.	Part number	Description	Quantity
1	-	Machine with pre-fitting: BCM + Tablet + GPS (VM31, 32, 42)	1
2	-	Any USB 2.0 stick	1
3	-	File: SF3000_2.80S.s19 + Test Starfire3000.txt	1
4	-	File: SF6000.PRC + Test Starfire6000.txt	1

**As well as a machine with the pre-fitting for BCM05 incl. the tablet and GPS (VM41, VM16).**

### Reimbursement

In the event of an affected GPS receiver during the warranty period, BOMAG will reimburse the following upon submission of a warranty claim in accordance with the applicable agreed BOMAG GPS receiver:

- 1 hour labour

Modifications to receivers outside the warranty period are necessary, but will not be reimbursed via a warranty claim.

### Warranty claim

- Only the costs stated in section **Reimbursement** can be reimbursed by means of a warranty claim.
- Required information for the warranty claim:
  - Text: "Work performed according to service information."01/063/2021
  - Attach images/photos of the performed work.
  - GPS serial number.



*If the required information is not provided, the warranty claim will not be valid.*

Services & Solutions  
S. Kneip

# SERVICE INFORMATION



## Head Office/Hauptsitz

BOMAG  
Hellerwald  
D-56154 Boppard  
Germany  
Telefon: +49 6742 100-0  
Fax: +49 6742 3090  
E-Mail: [info@bomag.com](mailto:info@bomag.com)

BOMAG  
Niederlassung Berlin  
Gewerbestraße 3  
15366 Hoppegarten  
GERMANY  
Tel.: +49 3342 369410  
Fax: +49 3342 369436  
e-mail: [nlberlin@bomag.com](mailto:nlberlin@bomag.com)

BOMAG  
Niederlassung Boppard  
Hellerwald  
56154 Boppard  
GERMANY  
Tel.: +49 6742 100360  
Fax: +49 6742 100392  
e-mail: [nlboppard@bomag.com](mailto:nlboppard@bomag.com)

BOMAG  
Niederlassung Chemnitz  
Querstraße 6  
09247 Chemnitz  
GERMANY  
Tel.: +49 3722 51590  
Fax: +49 3722 515951  
e-mail: [nlchemnitz@bomag.com](mailto:nlchemnitz@bomag.com)

BOMAG  
Niederlassung Hannover  
Dieselstraße 44  
30827 Garbsen-Berenbostel  
GERMANY  
Tel.: +49 5131 70060  
Fax: +49 5131 6766  
e-mail: [nlhannover@bomag.com](mailto:nlhannover@bomag.com)

BOMAG  
Niederlassung München  
Otto-Hahn-Ring 3  
85301 Schweitenkirchen  
GERMANY  
Tel.: +49 8444 91840  
Fax: +49 8444 91820  
e-mail: [nlmuenchen@bomag.com](mailto:nlmuenchen@bomag.com)

BOMAG  
Niederlassung Stuttgart  
Uferstraße 22  
73630 Remshalden-Grunbach  
GERMANY  
Tel.: +49 7151 986293  
Fax: +49 7151 9862959  
e-mail: [nlstuttgart@bomag.com](mailto:nlstuttgart@bomag.com)

BOMAG (China) Construction Machinery  
Co. , Ltd  
No. 2808, west Huancheng Road,  
Shanghai Comprehensive Industrial  
Zone Fengxian Shanghai 201401  
CHINA  
Tel.: +86 21 3365 5566  
Fax: +86 21 3365 5508  
e-mail: [china@bomag.com](mailto:china@bomag.com)

BOMAG France S.A.S.  
2, avenue du Général de Gaulle  
91170 VIRY-CHATILLON  
France  
Tel.: +33 1 69578600  
Fax: +33 1 69962660  
e-mail: [france@bomag.com](mailto:france@bomag.com)

BOMAG (GREAT BRITAIN), LTD  
Sheldon Way, Larkfield  
Aylesford  
Kent ME20 6SE  
GREAT BRITAIN  
Tel.: +44 1622 716611  
Fax: +44 1622 710233  
e-mail: [gb@bomag.com](mailto:gb@bomag.com)

BOMAG Italia Srl.  
Via Roma 50  
48011 Alfonsine (RA)  
ITALY  
Tel.: +39 0544 864235  
Fax: +39 0544 864367  
e-mail: [italy@bomag.com](mailto:italy@bomag.com)

BOMAG (CANADA), INC.  
3455 Semenyk Court  
Mississauga, Ontario L5C 4P9  
CANADA  
Tel.: +1 905 361 9961  
Fax: +1 905 361 9962  
e-mail: [canada@bomag.com](mailto:canada@bomag.com)

BOMAG Maschinenhandelsgesellschaft  
m.b.H  
Klausenweg 654  
2534 Alland  
AUSTRIA  
Tel.: +43 2258 20202  
Fax: +43 2258 20202-20  
e-mail: [austria@bomag.com](mailto:austria@bomag.com)

FAYAT BOMAG Polska Sp. z.o.o  
Ul. Szyszkowa 52  
02-285 Warszawa  
POLAND  
Tel.: +48 22 4820400  
Fax: +48 22 4820401  
e-mail: [poland@bomag.com](mailto:poland@bomag.com)

FAYAT BOMAG Rus OOO  
Klyazma block, h 1-g  
141400 Khimki, Moscow region, RF  
RUSSIA  
Tel.: +7 (495) 2879290  
Fax: +7 (495) 2879291  
e-mail: [russia@bomag.com](mailto:russia@bomag.com)

BOMAG GmbH, Singapore  
300, Beach Road  
The Concourse #38-03  
Singapore 199555  
MALAYSIA  
Tel.: +65 6 294 1277  
Fax: +65 6 294 1377  
e-mail: [singapore@bomag.com](mailto:singapore@bomag.com)

BOMA Equipment Hong Kong LTD  
Room 1003, 10/F Charm Centre  
700, Castle Peak Road  
Kowloon,  
HONG KONG  
Tel.: +852 2721 6363  
Fax: +852 2721 3212  
e-mail: [bomahk@bomag.com](mailto:bomahk@bomag.com)

BOMAG Americas, Inc.  
125 Blue Granite Parkway  
29130 Ridgeway SC  
United States  
Tel.: +1 803 3370700  
Fax: +1 803 3370800  
e-mail: [usa@bomag.com](mailto:usa@bomag.com)

BOMAG MARINI EQUIPMENTS LTDA.  
Rua Comendador Clemente Cifali, 530  
Distrito Industrial Ritter  
Cachoeirinha - RS  
Brazil  
ZIP code 94935-225  
Tel.: +55 51 2125-6677  
Fax: +55 51 3470-6220  
e-mail: [brasil@bomag.com](mailto:brasil@bomag.com)



# **BOMAG**

**FAYAT GROUP**

## **UPDATE INSTRUCTIONS**



**BCM GPS – STARFIRE 6000**





# UPDATE INSTRUCTIONS



## Table of contents

1. General information .....	5
1.1. Introduction .....	5
1.2. Concerning your safety .....	6
1.2.1. Basic prerequisites .....	6
1.2.2. Basic safety regulations for safe operation.....	8
2. Preparations and commissioning .....	10
2.1. Assembly and system start-up (tablet) .....	10
2.2. Preparing the USB stick and GPS receiver .....	10
3. Preparing the software .....	11
4. Performing the update .....	13
5. Success control .....	14



# UPDATE INSTRUCTIONS



## 1. General information

### 1.1. Introduction

#### General information

These conversion instructions are intended for professionally trained personnel.

These conversion instructions describe the removal, dismantling, assembly, installation and repair of components and assembly groups, insofar as this is reasonable with respect to tools and the spare parts supply.

#### Documentation

For the BOMAG machines described in these conversion instructions, the following documentation is also available:

- Operating and maintenance instructions
- Service manual
- Spare parts catalogue
- Service information (if required)

#### BOMAG original spare parts



*Use only BOMAG original spare parts.*

Original spare parts needed for repairs can be taken from the spare parts catalogue for the machine.

#### Copyright

Information and illustrations in these instructions are not to be reproduced, distributed or used for the purpose of competition without the consent of BOMAG. All rights according to copyright law are expressly reserved.

#### Illustrations

Illustrations are schematic diagrams and may differ from the ACTUAL condition of the machine.



## 1.2. Concerning your safety

### 1.2.1. Basic prerequisites

#### 1.2.1.1. General information

This BOMAG machine has been built in compliance with the latest technical standard and complies with the applicable regulations and technical rules.

However, this machine may represent a danger to persons and property if:

- it is used for purposes other than the ones it is intended for;
- it is operated by untrained personnel;
- it is changed or converted in an unprofessional way;
- the safety instructions are not observed.

Each person involved in the operation, maintenance and repair of the machine must therefore read and comply with these safety regulations. If necessary, the operating company must obtain the relevant signatures as confirmation.

Furthermore, the following also applies on principle:

- applicable accident prevention instructions;
- generally accepted safety and road traffic regulations;
- country/state specific safety regulations.

It is the duty of the operator to be acquainted with the safety regulations and to apply these accordingly. This also applies for local regulations concerning different types of handling activities. Should the recommendations in these instructions be different from the regulations valid in your country, you must comply with the safety regulations valid in your country.

#### 1.2.1.2. Explanation of signal words used:



##### **DANGER!**

##### **Danger to life if failing to comply!**

Sections marked with this symbol indicate an extremely dangerous situation that could lead to fatal or severe injuries, if this warning is disregarded.



##### **WARNING!**

##### **Danger to life or danger of severe injuries if failing to comply!**

Sections marked with this symbol indicate a dangerous situation that could lead to fatal or severe injuries, if this warning is disregarded.



##### **CAUTION!**

##### **Danger of injury if failing to comply!**

Sections marked with this symbol indicate a dangerous situation that could lead to minor injuries, if this warning is disregarded.



# UPDATE INSTRUCTIONS



**CAUTION!**  
**Danger of material damage if failing to comply!**  
 Sections marked with this symbol indicate potential damage to machines or components.








*Sections marked with this symbol provide technical information or instructions on using the machine or its components.*






**ENVIRONMENT!**  
**Environmental damage if failing to comply!**  
 Passages marked with this symbol indicate practices for safe and environmentally friendly disposal of fuels and lubricants as well as of replacement parts.

## 1.2.1.3. Personal protective equipment

Depending on the work to be carried out, personal protective equipment is required (to be provided by the operating company):

	Working clothes	Tight fitting work clothes with low tear resistance, tight fitting sleeves and no projecting parts prevent the wearer from being caught in moving machine parts.
	Safety shoes	They protect against heavy falling parts and slipping on slippery ground.
	Protective gloves	They protect the hands against scrapes, punctures or deeper injuries, irritating and caustic substances and burns.
	Safety goggles	They protect the eyes against airborne particles and squirting fluids.
	Face protection	This protects the face against airborne particles and squirting fluids.



	<p>Hard hat</p>	<p>This protects the head against falling parts and injuries.</p>
	<p>Hearing protection</p>	<p>This protects against extreme noise.</p>
	<p>Respiratory protection</p>	<p>This protects the airways against substances or particles.</p>

## 1.2.2. Basic safety regulations for safe operation

### 1.2.2.1. Other remaining dangers and risks

Despite careful work and compliance with standards and regulations it cannot be ruled out that further dangers may arise when working with and handling the machine.

Both the machine as well as all other system components comply with the currently valid safety regulations. Nevertheless, remaining risks cannot be ruled out completely, even when using the machine for its intended purpose and following all information given in the operating instructions.

A remaining risk can also not be excluded beyond the actual danger zone of the machine. Persons remaining in this area must pay particular attention to the machine so that they can react immediately in case of a possible malfunction, an incident or failure, etc.

All persons remaining in the area of the machine must be informed about the dangers that arise from the operation of the machine.

### 1.2.2.2. Regular safety inspections

Have the machine inspected by an expert/qualified person as required for the machine's operation and use – at least once a year at minimum.

# UPDATE INSTRUCTIONS



## 1.2.2.3. Modifications and alterations to the machine

Unauthorised modifications to the machine are prohibited for safety reasons.

Original parts and accessories have been specially designed for this machine.

We wish to make explicitly clear that we have not tested or approved any parts or accessories not supplied by us.

The installation and/or use of such products may have an adverse effect on active and/or passive safety.

## 1.2.2.4. Damage, defects, misuse of safety devices

Machines which are not safe to operate or road-safe must be taken out of service immediately and are not to be used until any defects or faults have been properly rectified.

Safety installations and switches must never be removed or rendered ineffective.



## 2. Preparations and commissioning

### 2.1. Assembly and system start-up (tablet)



**CAUTION!**

**Risk of falling**

Take special caution when ascending and descending, especially in bad weather!

1. Insert the tablet into the corresponding cabin holder.
2. Insert the GPS into the corresponding roof holder and connect the cable.
3. Switch the ignition on.
4. Start the tablet by pressing the start button on the left side (hold for 3 seconds).

### 2.2. Preparing the USB stick and GPS receiver

1. Unpack the appropriate SF6000.PRC firmware *file* onto an empty USB stick.
2. Copy the *Test Starfire6000.txt* file to the USB stick.
3. Insert the USB stick into the socket on the GPS receiver.



Figure 1

# UPDATE INSTRUCTIONS



## 3. Preparing the software

1. Carry out the work steps according to the picture sequence:

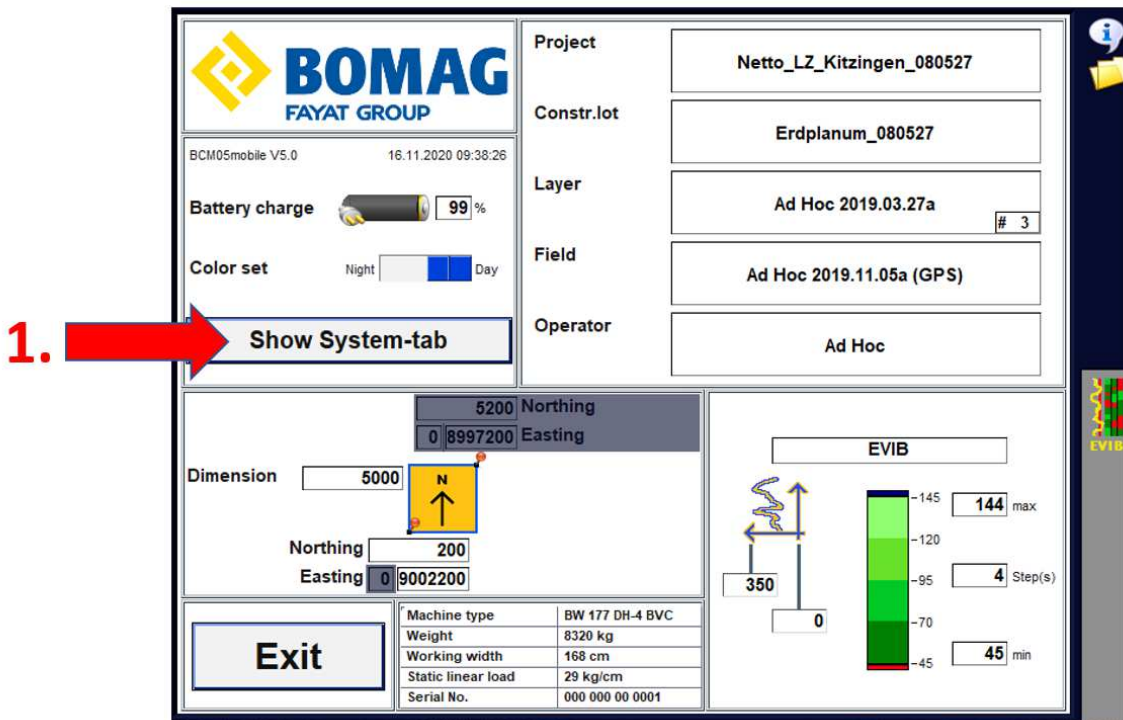


Figure 2

2. Click TAB uptwice and TAB down twice . Repeat several times.

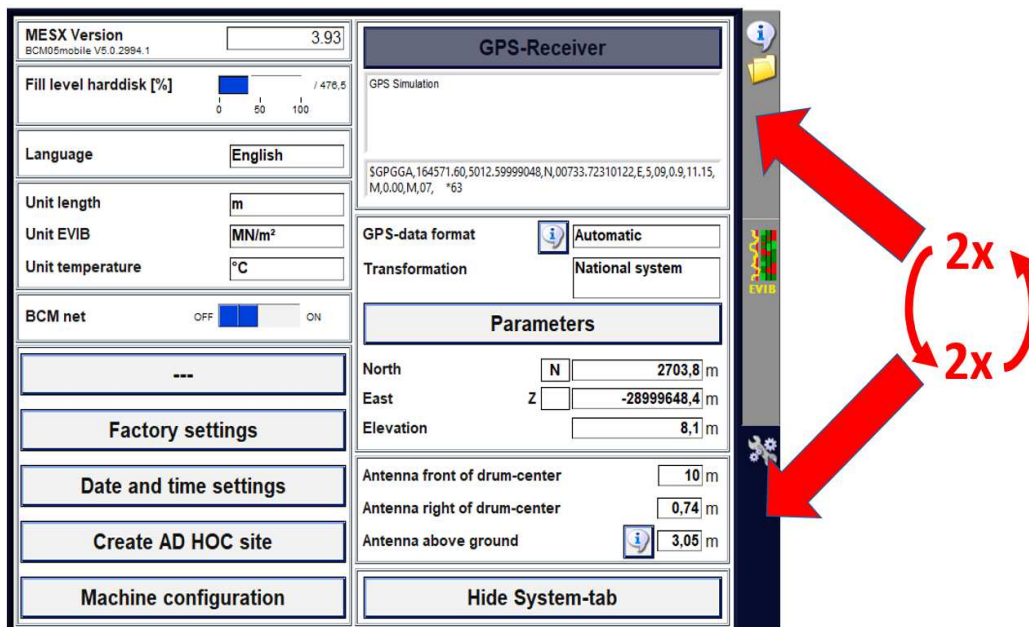


Figure 3



If you have problems at this point, there is also a short help video for step 2 in the download folder.



3. Carry out the work steps according to the picture sequence:

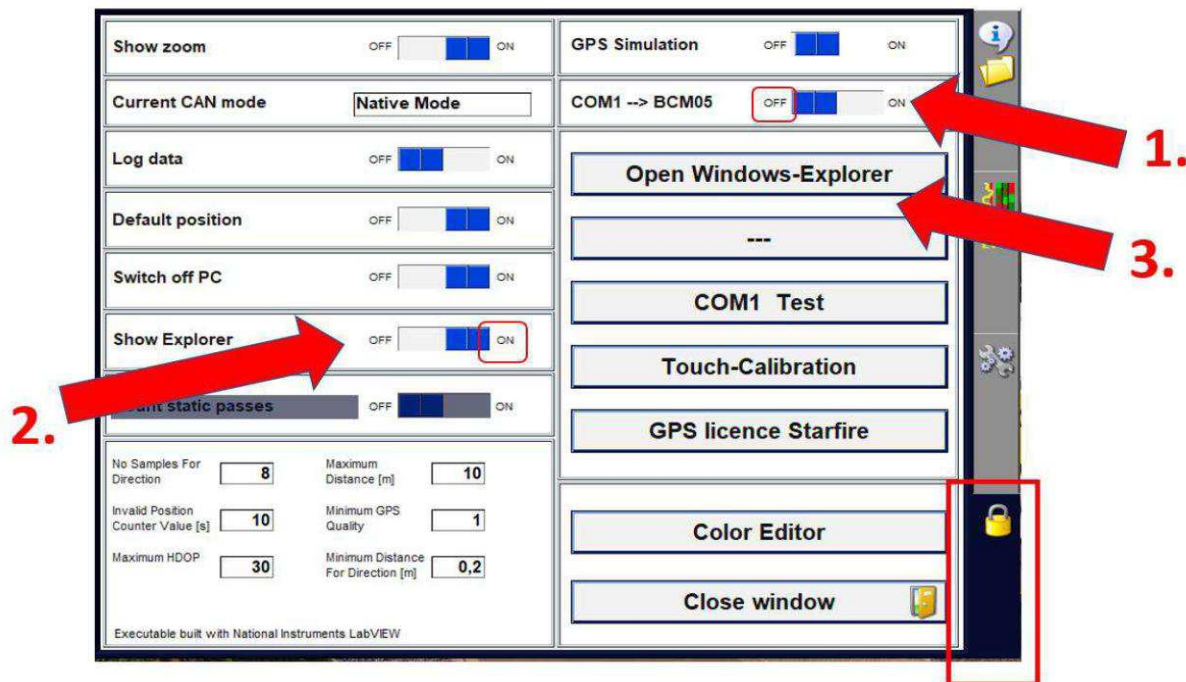


Figure 4

4. Ignore the message "Back to BCM".
5. Start the "NovaControl" software, which is located as an icon on the desktop that is now visible.



*If the icon is missing, the software is located in the Explorer under:*

*c:\BOMAG\_positioning\Support\John Deere\Starfire\_3000\Novacontrol\NovaControl.exe*  
*Start by double-clicking.*

# UPDATE INSTRUCTIONS



## 4. Performing the update



### CAUTION!

#### Risk of data loss and damage

- The voltage supply must not be interrupted under any circumstances during the update process!

1. Carry out the work steps according to the picture sequence. **Try all the different COM Ports until one connects.** Most likely its COM1, COM7 or COM31.

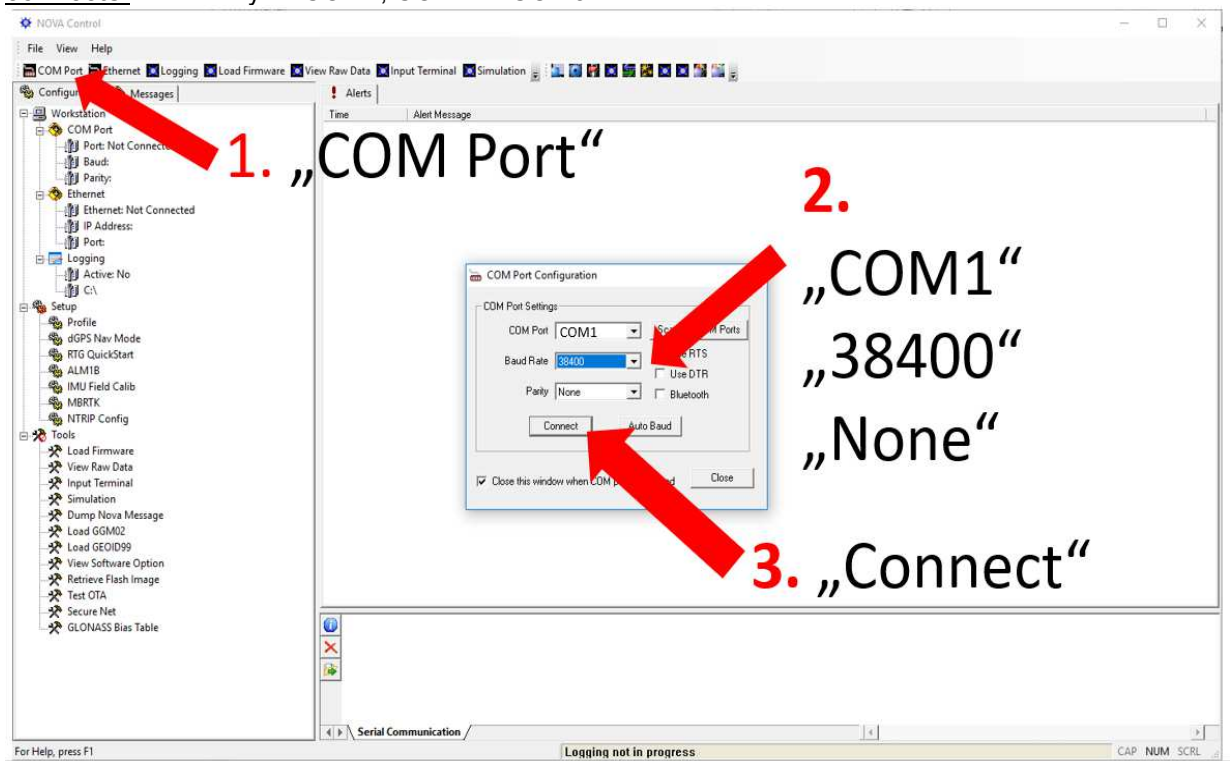


Figure 5

2. Carry out the work steps according to the picture sequence. Select "Input Terminal".



Figure 6



3. Enter `[USBLOADER]"sf6000.prc"` including brackets and quotation marks and confirm with "Send".



Figure 7

4. Wait approx. 15 minutes for the update to complete. The LED flashes lite blue at the beginning.
5. Close the "Input terminal" window.
6. Remove the GPS receiver from the voltage supply for 2 minutes.

## 5. Success control

1. Connect the GPS receiver to the voltage supply again.
2. Wait 2 minutes.
3. Connect the GPS again as in 4.1 explained.
4. Carry out the work steps according to the picture sequence:



Figure 8



# UPDATE INSTRUCTIONS



- Carry out the work steps according to the picture sequence:

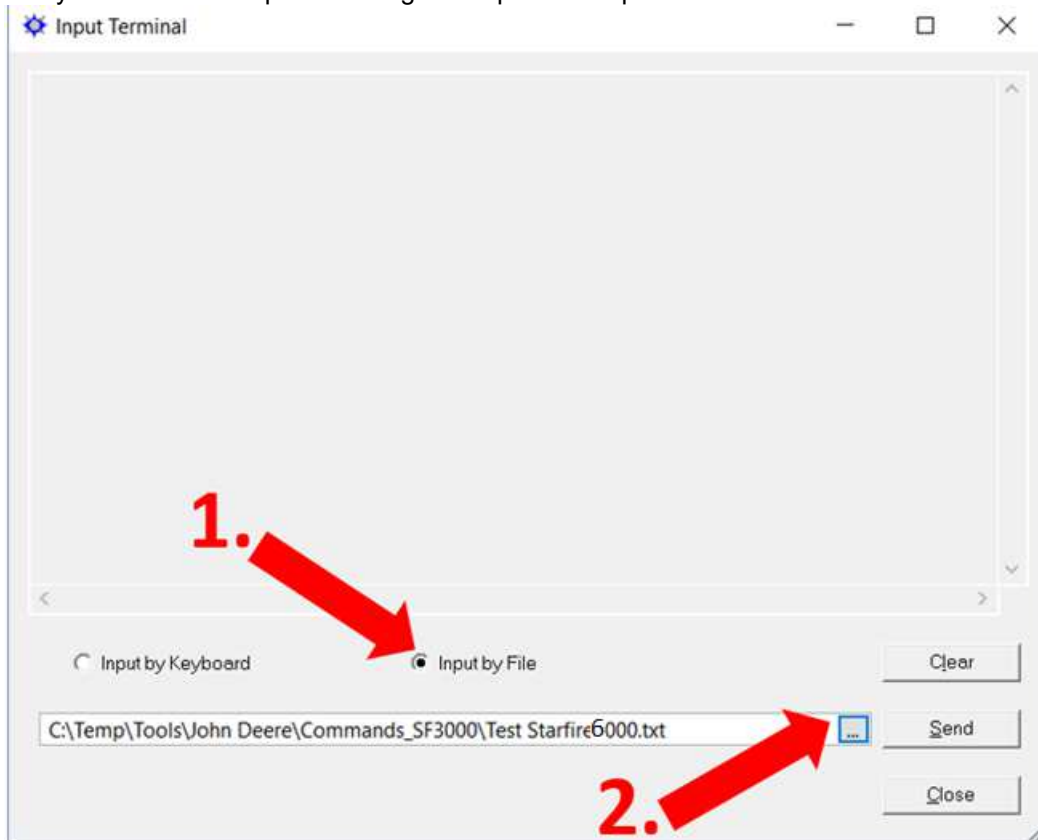


Figure 9

- Select and confirm the "Test Starfire6000.txt" file on the USB drive.
- Click "Send."
- Check the software status. (4.40P)

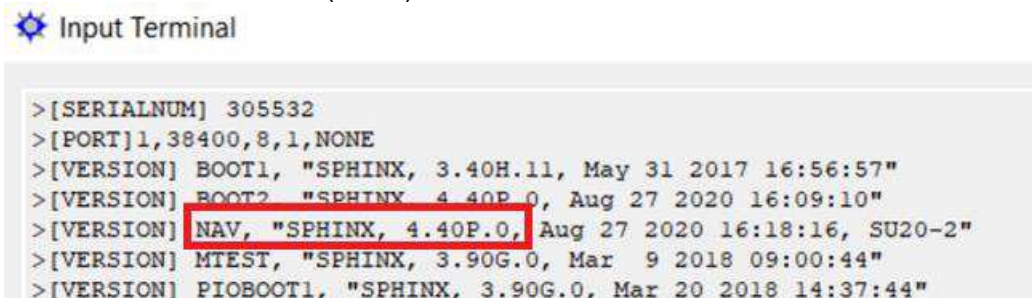


Figure 10

- Exit the software and restart the tablet.
- Check the function.

Head Office

BOMAG  
Hellerwald  
D-56154 Boppard  
Germany  
Phone: +49 6742 100-0  
Fax: +49 6742 3090  
e-mail: [info@bomag.com](mailto:info@bomag.com)



**BOMAG**  
**FAYAT GROUP**

**BOMAG**

Niederlassung Berlin  
Gewerbestraße 3  
15366 Hoppegarten  
GERMANY  
Tel.: +49 3342 369410  
Fax: +49 3342 369436  
e-mail: [nlberlin@bomag.com](mailto:nlberlin@bomag.com)

**BOMAG**

Niederlassung Boppard  
Hellerwald  
56154 Boppard  
GERMANY  
Tel.: +49 6742 100360  
Fax: +49 6742 100392  
e-mail: [nlboppard@bomag.com](mailto:nlboppard@bomag.com)

**BOMAG**

Niederlassung Chemnitz  
Querstraße 6  
09247 Chemnitz  
GERMANY  
Tel.: +49 3722 51590  
Fax: +49 3722 515951  
e-mail: [nlchemnitz@bomag.com](mailto:nlchemnitz@bomag.com)

**BOMAG**

Niederlassung Hannover  
Dieselstraße 44  
30827 Garbsen-Berenbostel  
GERMANY  
Tel.: +49 5131 70060  
Fax: +49 5131 6766  
e-mail: [nlhannover@bomag.com](mailto:nlhannover@bomag.com)

**BOMAG**

Niederlassung München  
Otto-Hahn-Ring 3  
85301 Schweitenkirchen  
GERMANY  
Tel.: +49 8444 91840  
Fax: +49 8444 918420  
e-mail: [nlmuenchen@bomag.com](mailto:nlmuenchen@bomag.com)

**BOMAG**

Niederlassung Stuttgart  
Uferstraße 22  
73630 Remshalden-Grundbach  
GERMANY  
Tel.: +49 7151 986293  
Fax: +49 7151 9862959  
e-mail: [nlstuttgart@bomag.com](mailto:nlstuttgart@bomag.com)

**BOMAG Maschinenhandelsgesellschaft  
m.b.H.**

Klausenweg 654  
2534 Alland  
AUSTRIA  
Tel.: +43 2258 20202  
Fax: +43 2258 20202-20  
e-mail: [austria@bomag.com](mailto:austria@bomag.com)

**BOMAG MARINI EQUIPMENTS LTDA**

Rua Comendador Clemente Cifali, 530  
Distrito Industrial Ritter  
Cachoeirinha – RS  
BRAZIL  
ZIP cod 94935-225  
Tel.: +55 51 2125-6677  
Fax: +55 51 3470-6220  
e-mail: [brasil@bomag.com](mailto:brasil@bomag.com)

**BOMAG (CANADA), INC.**

3455 Semenyk Court  
Mississauga, Ontario  
L5C 4P9  
CANADA  
Tel.: +1 905 361 9961  
Fax: +1 905 361 9962  
e-mail: [canada@bomag.com](mailto:canada@bomag.com)

**BOMAG (China) Construction  
Machinery Co., Ltd**

No. 2808, West Huancheng Road,  
Shanghai Comprehensive Industrial  
Zone Fengxian Shanghai 201401  
CHINA  
Te.: +86 21 3365 5566  
Fax: +86 21 3365 5508  
e-mail: [bomahk@bomag.com](mailto:bomahk@bomag.com)

**BOMAG France S.A.S.**

2, avenue du Général de Gaulle  
91170 VIRY-CHATILLON  
FRANCE  
Tel.: +33 1 69578600  
Fax: +33 1 69962660  
e-mail: [france@bomag.com](mailto:france@bomag.com)

**BOMAG (GREAT BRITAIN), LTD**

Sheldon Way, Larkfield  
Aylesford  
Kent ME20 6SE  
GREAT BRITAIN  
Tel.: +44 1622 716611  
Fax: +44 1622 710233  
e-mail: [gb@bomag.com](mailto:gb@bomag.com)

**BOMA Equipment Hong Kong LTD**

Room 1003, 10/F Charm Centre  
700, Castle Peak Road  
Kowloon,  
HONG KONG  
Tel.: +852 2721 6363  
Fax: +852 2721 3212  
e-mail: [bomahk@bomag.com](mailto:bomahk@bomag.com)

**BOMAG Italia Srl.**

Via Roma 50  
48011 Alfonsine  
ITALY  
Tel.: +39 0544 864235  
Fax: +37 0544 864367  
e-mail: [italy@bomag.com](mailto:italy@bomag.com)

**FAYAT BOMAG Polska Sp. z.o.o.**

Ul. Szyszkowa 52  
02-285 Warszawa  
POLAND  
Tel.: +48 22 4820400  
Fax: +48 22 4820401  
e-mail: [poland@bomag.com](mailto:poland@bomag.com)

**FAYAT BOMAG Rus OOO**

Klyazma block, h 1-g  
141400 Khimki, Moscow region  
RUSSIA  
Tel.: +7 (495) 2879290  
Fax: +7 (495) 2879291  
e-mail: [russia@bomag.com](mailto:russia@bomag.com)

**BOMAG GmbH, Singapore**

300, Beach Road  
The Concourse, , 18-06  
Singapore 199555  
SINGAPORE  
Tel.: +65 294 1277  
Fax: +68 294 1377  
e-mail: [singapore@bomag.com](mailto:singapore@bomag.com)

**BOMAG Americas, Inc.**

125 Blue Granite Parkway  
Ridgeway SC 29130  
U.S.A.  
Tel.: +1 803 3370700  
Fax: +1 803 3370800  
e-mail: [usa@bomag.com](mailto:usa@bomag.com)

