

SERVICE INFORMATION



SI number:	01/062/2021	Date:	01.02.2021
Replaces:	01/050/2015	No. of pages:	2

Title:	New correction signal frequency (2021) for the BCM 05 GPS receiver		
Product:	BCM 05		
Priority:	<input type="checkbox"/> Immediately	<input checked="" type="checkbox"/> Next service	<input checked="" type="checkbox"/> Fix-as-fail
			<input checked="" type="checkbox"/> Information
Serial number range:	-		
	-		
	-		
	-		
	-		

As part of the continuous product improvement, the correction signals of the BCM GPS receiver will be changed.

Starting from 01.02.2021, StarFire correction signal might only be available to a limited degree due to a frequency change. The usual accuracy of the GPS receiver will thus be reduced.

An update of the GPS firmware is required to receive coordinates with the usual accuracy (SF1/SF2).

Please inform the affected customers in your area!

The change of the firmware is to be carried out according to the enclosed description.

The required firmware is available for download under the following link:

<https://www.bomag.com/ww-en/serviceinfostarfire2021/>

Requirements for the new configuration:

Pos.	Part number	Description	Quantity
1	-	Machine with pre-fitting: BCM + Tablet + GPS (VM31, 32, 42)	1
2	-	Any USB 2.0 stick	1
3	-	File: SF3000_2.80S.s19 + Test Starfire3000.txt	1
4	-	File: SF6000.PRC + Test Starfire6000.txt	1

As well as a machine with the pre-fitting for BCM05 incl. the tablet and GPS (VM41, VM16).

Reimbursement

In the event of an affected GPS receiver during the warranty period, BOMAG will reimburse the following upon submission of a warranty claim in accordance with the applicable agreed BOMAG GPS receiver:

- 1 hour labour

Modifications to receivers outside the warranty period are necessary, but will not be reimbursed via a warranty claim.

Warranty claim

- Only the costs stated in section **Reimbursement** can be reimbursed by means of a warranty claim.
- Required information for the warranty claim:
 - Text: "Work performed according to service information."01/062/2021
 - Attach images/photos of the performed work.
 - GPS serial number.



If the required information is not provided, the warranty claim will not be valid.

Services & Solutions
S. Kneip

SERVICE INFORMATION



Head Office/Hauptsitz

BOMAG
Hellerwald
D-56154 Boppard
Germany
Telefon: +49 6742 100-0
Fax: +49 6742 3090
E-Mail: info@bomag.com

BOMAG
Niederlassung Berlin
Gewerbestraße 3
15366 Hoppegarten
GERMANY
Tel.: +49 3342 369410
Fax: +49 3342 369436
e-mail: nlberlin@bomag.com

BOMAG
Niederlassung Boppard
Hellerwald
56154 Boppard
GERMANY
Tel.: +49 6742 100360
Fax: +49 6742 100392
e-mail: nlboppard@bomag.com

BOMAG
Niederlassung Chemnitz
Querstraße 6
09247 Chemnitz
GERMANY
Tel.: +49 3722 51590
Fax: +49 3722 515951
e-mail: nlchemnitz@bomag.com

BOMAG
Niederlassung Hannover
Dieselstraße 44
30827 Garbsen-Berenbostel
GERMANY
Tel.: +49 5131 70060
Fax: +49 5131 6766
e-mail: nlhannover@bomag.com

BOMAG
Niederlassung München
Otto-Hahn-Ring 3
85301 Schweitenkirchen
GERMANY
Tel.: +49 8444 91840
Fax: +49 8444 91820
e-mail: nlmuenchen@bomag.com

BOMAG
Niederlassung Stuttgart
Uferstraße 22
73630 Remshalden-Grunbach
GERMANY
Tel.: +49 7151 986293
Fax: +49 7151 9862959
e-mail: nlstuttgart@bomag.com

BOMAG (China) Construction Machinery
Co., Ltd
No. 2808, west Huancheng Road,
Shanghai Comprehensive Industrial
Zone Fengxian Shanghai 201401
CHINA
Tel.: +86 21 3365 5566
Fax: +86 21 3365 5508
e-mail: china@bomag.com

BOMAG France S.A.S.
2, avenue du Général de Gaulle
91170 VIRY-CHATILLON
France
Tel.: +33 1 69578600
Fax: +33 1 69962660
e-mail: france@bomag.com

BOMAG (GREAT BRITAIN), LTD
Sheldon Way, Larkfield
Aylesford
Kent ME20 6SE
GREAT BRITAIN
Tel.: +44 1622 716611
Fax: +44 1622 710233
e-mail: gb@bomag.com

BOMAG Italia Srl.
Via Roma 50
48011 Alfonsine (RA)
ITALY
Tel.: +39 0544 864235
Fax: +39 0544 864367
e-mail: italy@bomag.com

BOMAG (CANADA), INC.
3455 Semenyk Court
Mississauga, Ontario L5C 4P9
CANADA
Tel.: +1 905 361 9961
Fax: +1 905 361 9962
e-mail: canada@bomag.com

BOMAG Maschinenhandelsgesellschaft
m.b.H
Klausenweg 654
2534 Alland
AUSTRIA
Tel.: +43 2258 20202
Fax: +43 2258 20202-20
e-mail: austria@bomag.com

FAYAT BOMAG Polska Sp. z.o.o
Ul. Szyszkowa 52
02-285 Warszawa
POLAND
Tel.: +48 22 4820400
Fax: +48 22 4820401
e-mail: poland@bomag.com

FAYAT BOMAG Rus OOO
Klyazma block, h 1-g
141400 Khimki, Moscow region, RF
RUSSIA
Tel.: +7 (495) 2879290
Fax: +7 (495) 2879291
e-mail: russia@bomag.com

BOMAG GmbH, Singapore
300, Beach Road
The Concourse #38-03
Singapore 199555
MALAYSIA
Tel.: +65 6 294 1277
Fax: +65 6 294 1377
e-mail: singapore@bomag.com

BOMA Equipment Hong Kong LTD
Room 1003, 10/F Charm Centre
700, Castle Peak Road
Kowloon,
HONG KONG
Tel.: +852 2721 6363
Fax: +852 2721 3212
e-mail: bomahk@bomag.com

BOMAG Americas, Inc.
125 Blue Granite Parkway
29130 Ridgeway SC
United States
Tel.: +1 803 3370700
Fax: +1 803 3370800
e-mail: usa@bomag.com

BOMAG MARINI EQUIPMENTS LTDA.
Rua Comendador Clemente Cifali, 530
Distrito Industrial Ritter
Cachoeirinha - RS
Brazil
ZIP code 94935-225
Tel.: +55 51 2125-6677
Fax: +55 51 3470-6220
e-mail: brasil@bomag.com



BOMAG
FAYAT GROUP

UPDATE INSTRUCTIONS



BCM GPS – STARFIRE 3000



Update instructions



Table of contents

1. General information	5
1.1. Introduction	5
1.2. Concerning your safety	6
1.2.1. Basic prerequisites	6
1.2.2. Basic safety regulations for safe operation.....	8
2. Preparations and commissioning	10
2.1. Assembly and system start-up.....	10
2.2. Preparing the USB stick.....	10
3. Preparing the software	10
4. Performing the update	12
5. Success control	14

Update instructions



1. General information

1.1. Introduction

General information

These update instructions are intended for professionally trained personnel.

These update instructions describe the removal, dismantling, assembly, installation and repair of components and assembly groups, insofar as this is reasonable with respect to tools and the spare parts supply.

Documentation

For the BOMAG machines described in these conversion instructions, the following documentation is also available:

- Operating and maintenance instructions
- Service manual
- Spare parts catalogue
- Service information (if required)

BOMAG original spare parts



Use only BOMAG original spare parts.

Original spare parts needed for repairs can be taken from the spare parts catalogue for the machine.

Copyright

Information and illustrations in these instructions are not to be reproduced, distributed or used for the purpose of competition without the consent of BOMAG. All rights according to copyright law are expressly reserved.

Illustrations

Illustrations are schematic diagrams and may differ from the ACTUAL condition of the machine.



1.2. Concerning your safety

1.2.1. Basic prerequisites

1.2.1.1. General information

This BOMAG machine has been built in compliance with the latest technical standard and complies with the applicable regulations and technical rules.

However, this machine may represent a danger to persons and property if:

- it is used for purposes other than the ones it is intended for;
- it is operated by untrained personnel;
- it is changed or converted in an unprofessional way;
- the safety instructions are not observed.

Each person involved in the operation, maintenance and repair of the machine must therefore read and comply with these safety regulations. If necessary, the operating company must obtain the relevant signatures as confirmation.

Furthermore, the following also applies on principle:

- applicable accident prevention instructions;
- generally accepted safety and road traffic regulations;
- country/state specific safety regulations.

It is the duty of the operator to be acquainted with the safety regulations and to apply these accordingly. This also applies for local regulations concerning different types of handling activities.

Should the recommendations in these instructions be different from the regulations valid in your country, you must comply with the safety regulations valid in your country.

1.2.1.2. Explanation of signal words used:



DANGER!

Danger to life if failing to comply!

Sections marked with this symbol indicate an extremely dangerous situation that could lead to fatal or severe injuries, if this warning is disregarded.



WARNING!

Danger to life or danger of severe injuries if failing to comply!

Sections marked with this symbol indicate a dangerous situation that could lead to fatal or severe injuries, if this warning is disregarded.



CAUTION!

Danger of injury if failing to comply!

Sections marked with this symbol indicate a dangerous situation that could lead to minor injuries, if this warning is disregarded.

Update instructions



CAUTION!

Danger of material damage if failing to comply!
Sections marked with this symbol indicate potential damage to machines or components.



Sections marked with this symbol provide technical information or instructions on using the machine or its components.







ENVIRONMENT!

Environmental damage if failing to comply!




Passages marked with this symbol indicate practices for safe and environmentally friendly disposal of fuels and lubricants as well as of replacement parts.

1.2.1.3. Personal protective equipment

Depending on the work to be carried out, personal protective equipment is required (to be provided by the operating company):

	Working clothes	Tight fitting work clothes with low tear resistance, tight fitting sleeves and no projecting parts prevent the wearer from being caught in moving machine parts.
	Safety shoes	They protect against heavy falling parts and slipping on slippery ground.
	Protective gloves	They protect the hands against scrapes, punctures or deeper injuries, irritating and caustic substances and burns.
	Safety goggles	They protect the eyes against airborne particles and squirting fluids.
	Face protection	This protects the face against airborne particles and squirting fluids.



	<p>Hard hat</p>	<p>This protects the head against falling parts and injuries.</p>
	<p>Hearing protection</p>	<p>This protects against extreme noise.</p>
	<p>Respiratory protection</p>	<p>This protects the airways against substances or particles.</p>

1.2.2. Basic safety regulations for safe operation

1.2.2.1. Other remaining dangers and risks

Despite careful work and compliance with standards and regulations it cannot be ruled out that further dangers may arise when working with and handling the machine.

Both the machine as well as all other system components comply with the currently valid safety regulations. Nevertheless, remaining risks cannot be ruled out completely, even when using the machine for its intended purpose and following all information given in the operating instructions.

A remaining risk can also not be excluded beyond the actual danger zone of the machine. Persons remaining in this area must pay particular attention to the machine so that they can react immediately in case of a possible malfunction, an incident or failure, etc.

All persons remaining in the area of the machine must be informed about the dangers that arise from the operation of the machine.

1.2.2.2. Regular safety inspections

Have the machine inspected by an expert/qualified person as required for the machine's operation and use – at least once a year at minimum.



1.2.2.3. Modifications and alterations to the machine

Unauthorised modifications to the machine are prohibited for safety reasons.

Original parts and accessories have been specially designed for this machine.

We wish to make explicitly clear that we have not tested or approved any parts or accessories not supplied by us.

The installation and/or use of such products may have an adverse effect on active and/or passive safety.

1.2.2.4. Damage, defects, misuse of safety devices

Machines which are not safe to operate or road-safe must be taken out of service immediately and are not to be used until any defects or faults have been properly rectified.

Safety installations and switches must never be removed or rendered ineffective.



2. Preparations and commissioning

2.1. Assembly and system start-up



CAUTION!
Risk of falling
 Take special caution when ascending and descending, especially in bad weather!

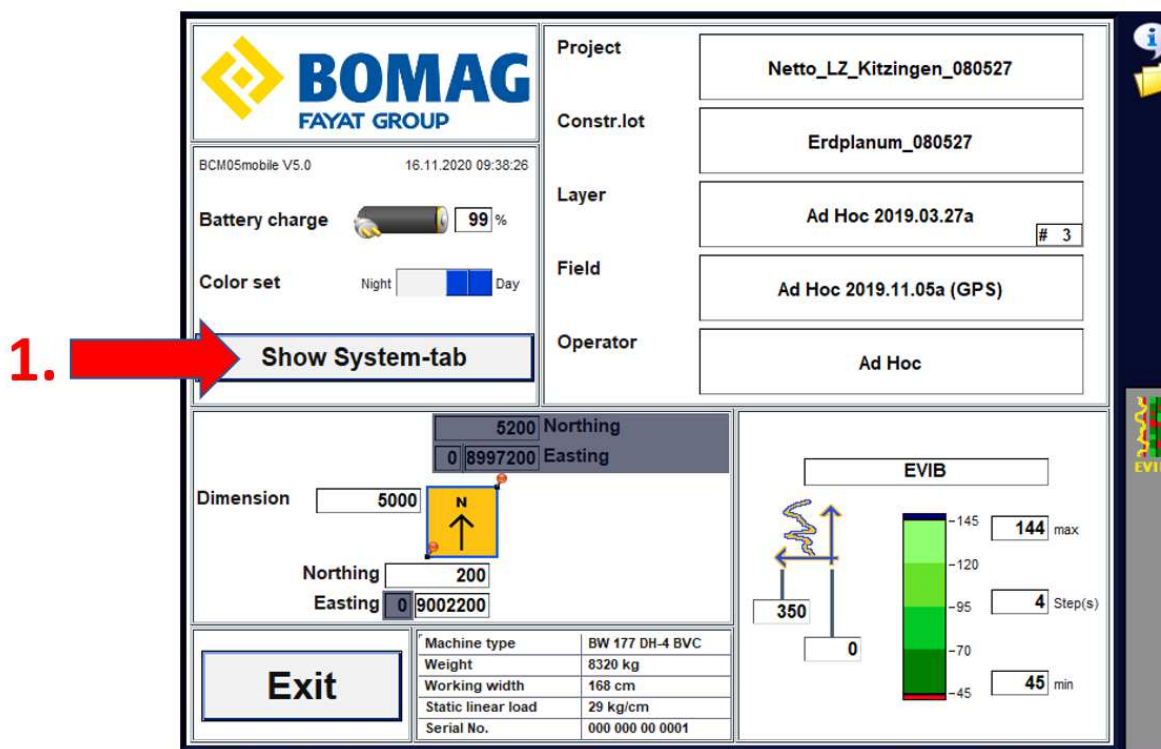
1. Insert the tablet into the corresponding cabin holder.
2. Insert the GPS into the corresponding roof holder and connect the cable.
3. Switch the ignition on.
4. Start the tablet by pressing the start button on the left side (hold for 3 seconds).

2.2. Preparing the USB stick

1. Unpack the appropriate firmware file *SF3000_2.80S.s19* onto an empty USB stick.
2. Copy the *Test Starfire3000.txt* file to the USB stick.

3. Preparing the software

1. Carry out the work steps according to the picture sequence:



The screenshot shows the BOMAG software interface. At the top left is the BOMAG logo and 'FAYAT GROUP'. Below it, the version 'BCM05mobile V5.0' and time '16.11.2020 09:38:26' are displayed. A battery charge indicator shows 99%. There are 'Night' and 'Day' color set options. A 'Show System-tab' button is highlighted with a red arrow and the number '1.'. To the right, a 'Project' menu is open, showing 'Netto_LZ_Kitzingen_080527', 'Constr.lot: Erdplanum_080527', 'Layer: Ad Hoc 2019.03.27a # 3', 'Field: Ad Hoc 2019.11.05a (GPS)', and 'Operator: Ad Hoc'. Below the menu, there are coordinate fields for '5200 Northing' and '0 8997200 Easting', a 'Dimension' of 5000, and a compass icon. An 'EVIB' section shows a vertical scale from -145 to -45, with '144 max', '4 Step(s)', and '45 min' values. A table at the bottom right lists machine specifications: Machine type (BW 177 DH-4 BVC), Weight (8320 kg), Working width (168 cm), Static linear load (29 kg/cm), and Serial No. (000 000 00 0001). An 'Exit' button is also visible.

Figure 1

Update instructions



2. Clicktwice at the top and twice at the bottom. Repeat several times.

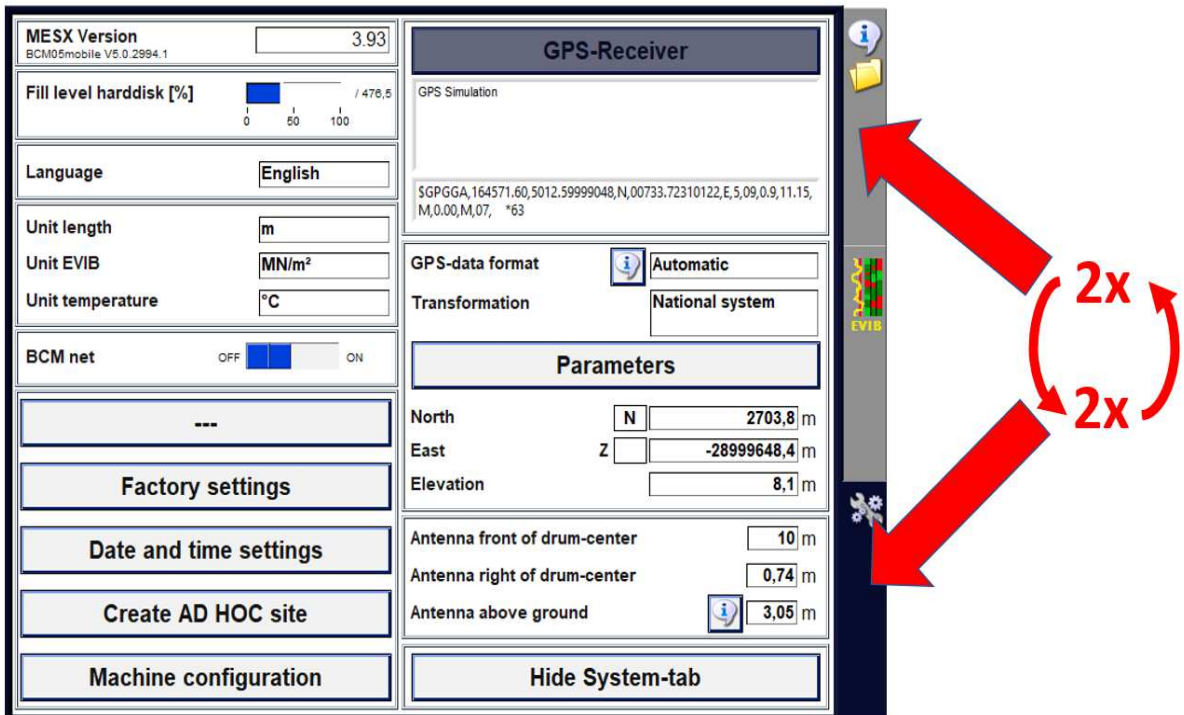


Figure 2



If you have problems at this point, there is also a short help video for step 2 in the download folder.

3. Carry out the work steps according to the picture sequence:

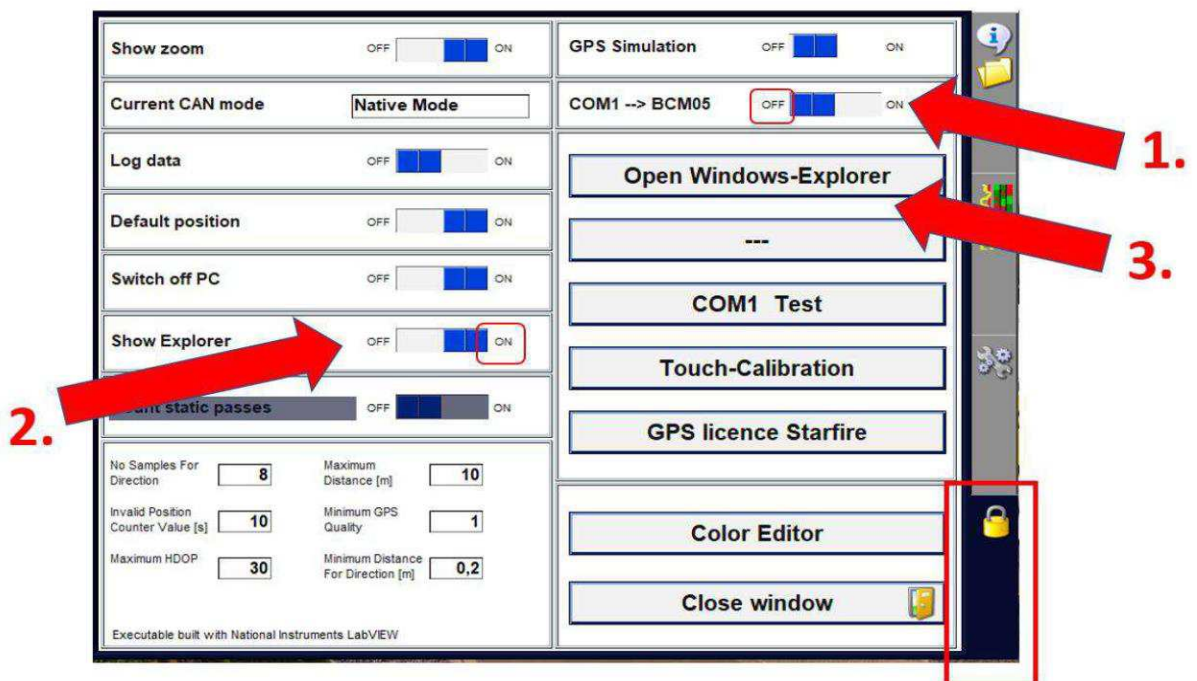


Figure 3



4. Ignore the message "Back to BCM".
5. Start the "NovaControl" software, which is located as an icon on the desktop that is now visible.



If the icon is missing, the software is located in the Explorer under:

`c:\BOMAG_positioning\Support\John Deere\Starfire_3000\Novacontrol\NovaControl.exe`

Start by double-clicking.

4. Performing the update



CAUTION!

Risk of data loss and damage

- The voltage supply must not be interrupted under any circumstances during the update process!

1. Carry out the work steps according to the picture sequence. **Try all the different COM Ports until it connects.** Most likely its COM1, COM7 or COM 31.

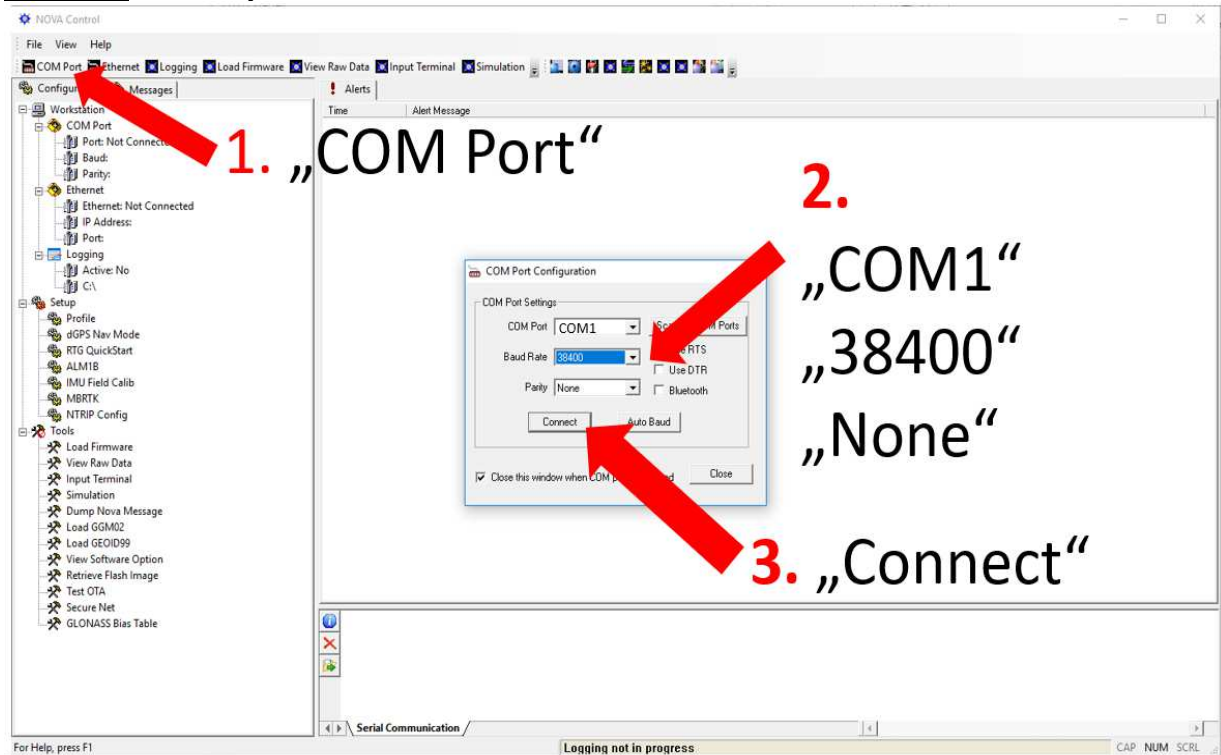


Figure 4

2. Insert the USB stick with the software into the USB port in the holder.



Alternatively, the USB stick can be plugged directly into the tablet's USB port.

Update instructions



3. Carry out the work step according to the picture sequence:

1. „Load Firmware“



Figure 5

4. At "File" (1.) Select the "SF3000_2.80S.s19" file from the USB stick.

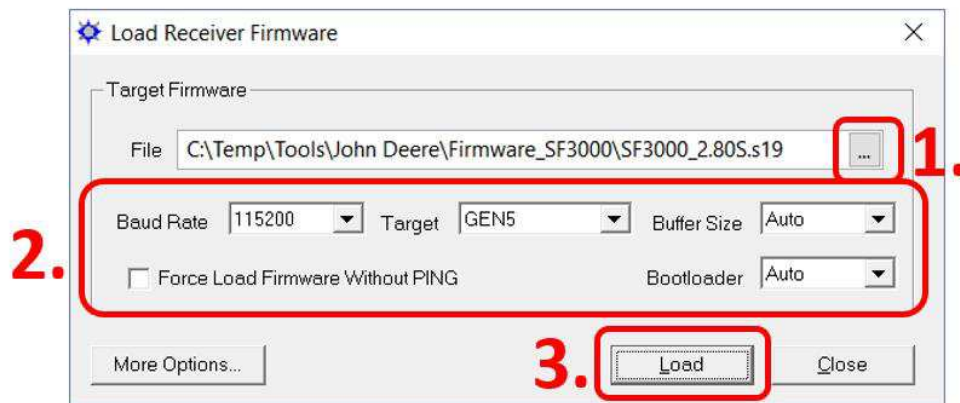


Figure 6

5. Wait during the update process.

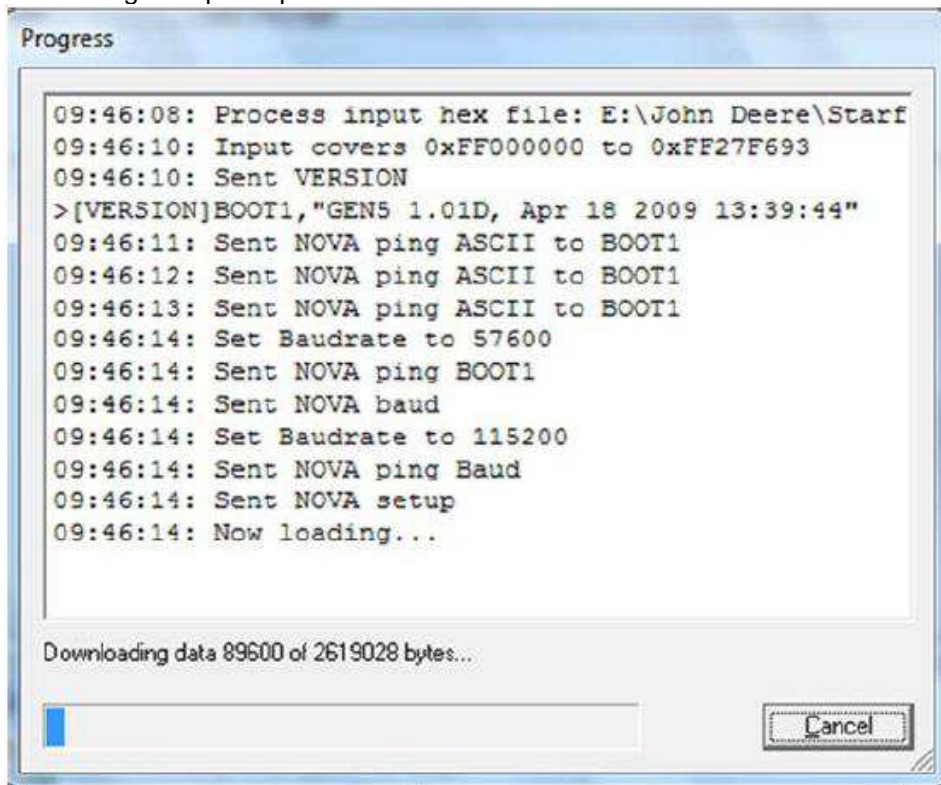


Figure 7



6. After a few minutes, the message "Load successfully!" appears.

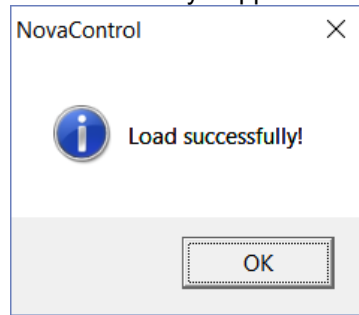


Figure 8

7. Confirm the message with "OK".
8. Remove the GPS receiver from the voltage supply for 2 minutes.

5. Success control

1. Connect the GPS receiver to the voltage supply again.
2. Wait 2 minutes
3. Connect the GPS again as explained in 4.1.
4. Carry out the work step according to the picture sequence:



Figure 9

Update instructions



5. Carry out the work steps according to the picture sequence:

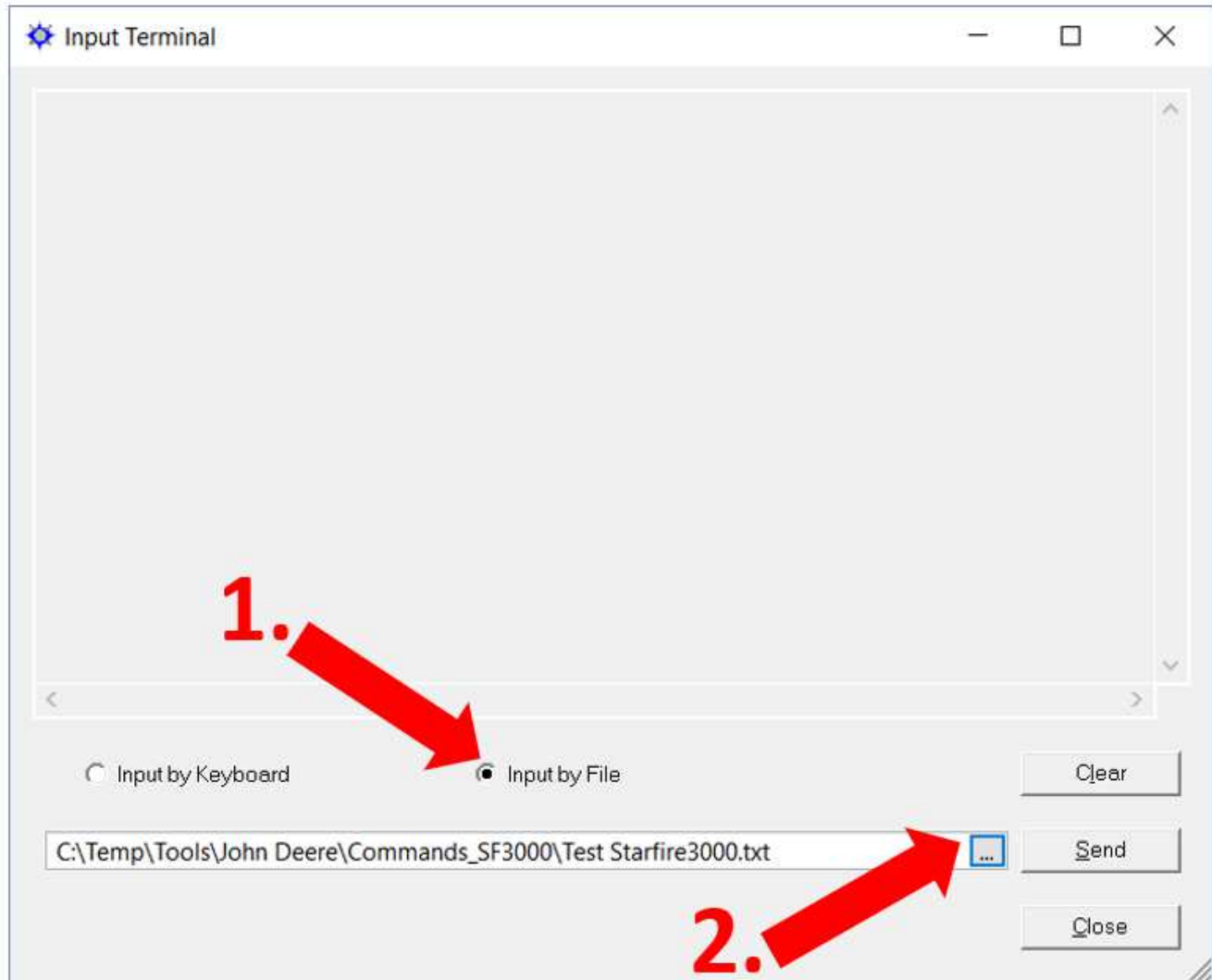


Figure 10

6. Select and confirm the "Test Starfire3000.txt" file on the USB drive.
7. Click "Send."



8. Check the software status (02.80s)

```
Input Terminal Starfire 3000
[profile]
[serialnum]
[antennaoffset]
[PORT]
[version]
[OUTPUT]

>[SERIALNUM]784823
>[PORT]1_38400_8_1_NONE
>[VERSION] NAV, "GEN5 02.80S CoreNav=CNS.0.003 DSP=025 IMU= 01.5.4, Jul 23 2020 11:53:27
>[OUTPUT]NMEAGGA,ONTIME,0.20,1
>[OUTPUT]NMEAPNCTGGA,ONTIME,0.20,1
```

Figure 11

9. Exit the software and restart the tablet. (Shutdown windows)
10. Check the function.

Head Office
BOMAG
Hellerwald
D-56154 Boppard
Germany
Phone: +49 6742 100-0
Fax: +49 6742 3090
e-mail: info@bomag.com



BOMAG
FAYAT GROUP

BOMAG
Niederlassung Berlin
Gewerbstraße 3
15366 Hoppegarten
GERMANY
Tel.: +49 3342 369410
Fax: +49 3342 369436
e-mail: nlberlin@bomag.com

BOMAG
Niederlassung Boppard
Hellerwald
56154 Boppard
GERMANY
Tel.: +49 6742 100360
Fax: +49 6742 100392
e-mail: nlboppard@bomag.com

BOMAG
Niederlassung Chemnitz
Querstraße 6
09247 Chemnitz
GERMANY
Tel.: +49 3722 51590
Fax: +49 3722 515951
e-mail: nlchemnitz@bomag.com

BOMAG
Niederlassung Hannover
Dieselstraße 44
30827 Garbsen-Berenbostel
GERMANY
Tel.: +49 5131 70060
Fax: +49 5131 6766
e-mail: nlhannover@bomag.com

BOMAG
Niederlassung München
Otto-Hahn-Ring 3
85301 Schweitenkirchen
GERMANY
Tel.: +49 8444 91840
Fax: +49 8444 918420
e-mail: nlmuenchen@bomag.com

BOMAG
Niederlassung Stuttgart
Uferstraße 22
73630 Remshalden-Grundbach
GERMANY
Tel.: +49 7151 986293
Fax: +49 7151 9862959
e-mail: nlstuttgart@bomag.com

BOMAG Maschinenhandels-gesellschaft
m.b.H.
Klausenweg 654
2534 Alland
AUSTRIA
Tel.: +43 2258 20202
Fax: +43 2258 20202-20
e-mail: austria@bomag.com

BOMAG MARINI EQUIPMENTS LTDA
Rua Comendador Clemente Cifali, 530
Distrito Industrial Ritter
Cachoeirinha – RS
BRAZIL
ZIP cod 94935-225
Tel.: +55 51 2125-6677
Fax: +55 51 3470-6220
e-mail: brasil@bomag.com

BOMAG (CANADA), INC.
3455 Semenyk Court
Mississauga, Ontario
L5C 4P9
CANADA
Tel.: +1 905 361 9961
Fax: +1 905 361 9962
e-mail: canada@bomag.com

BOMAG (China) Construction
Machinery Co., Ltd
No. 2808, West Huancheng Road,
Shanghai Comprehensive Industrial
Zone Fengxian Shanghai 201401
CHINA
Tel.: +86 21 3365 5566
Fax: +86 21 3365 5508
e-mail: bomahk@bomag.com

BOMAG France S.A.S.
2, avenue du Général de Gaulle
91170 VIRY-CHATILLON
FRANCE
Tel.: +33 1 69578600
Fax: +33 1 69962660
e-mail: france@bomag.com

BOMAG (GREAT BRITAIN), LTD
Sheldon Way, Larkfield
Aylesford
Kent ME20 6SE
GREAT BRITAIN
Tel.: +44 1622 716611
Fax: +44 1622 710233
e-mail: gb@bomag.com

BOMA Equipment Hong Kong LTD
Room 1003, 10/F Charm Centre
700, Castle Peak Road
Kowloon,
HONG KONG
Tel.: +852 2721 6363
Fax: +852 2721 3212
e-mail: bomahk@bomag.com

BOMAG Italia Srl.
Via Roma 50
48011 Alfonsine
ITALY
Tel.: +39 0544 864235
Fax: +37 0544 864367
e-mail: italy@bomag.com

FAYAT BOMAG Polska Sp. z.o.o.
Ul. Szyszkowa 52
02-285 Warszawa
POLAND
Tel.: +48 22 4820400
Fax: +48 22 4820401
e-mail: poland@bomag.com

FAYAT BOMAG Rus OOO
Klyazma block, h 1-g
141400 Khimki, Moscow region
RUSSIA
Tel.: +7 (495) 2879290
Fax: +7 (495) 2879291
e-mail: russia@bomag.com

BOMAG GmbH, Singapore
300, Beach Road
The Concourse, , 18-06
Singapore 199555
SINGAPORE
Tel.: +65 294 1277
Fax: +68 294 1377
e-mail: singapore@bomag.com

BOMAG Americas, Inc.
125 Blue Granite Parkway
Ridgeway SC 29130
U.S.A.
Tel.: +1 803 3370700
Fax: +1 803 3370800
e-mail: usa@bomag.com

